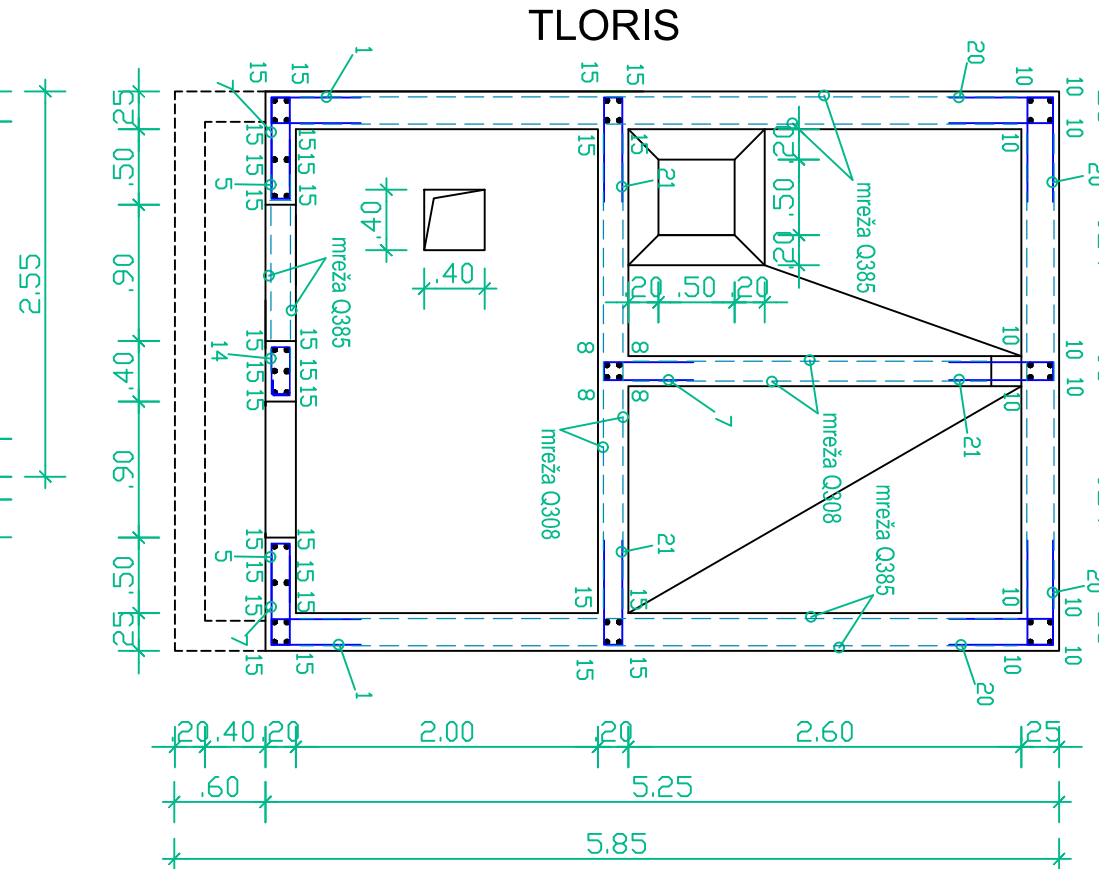
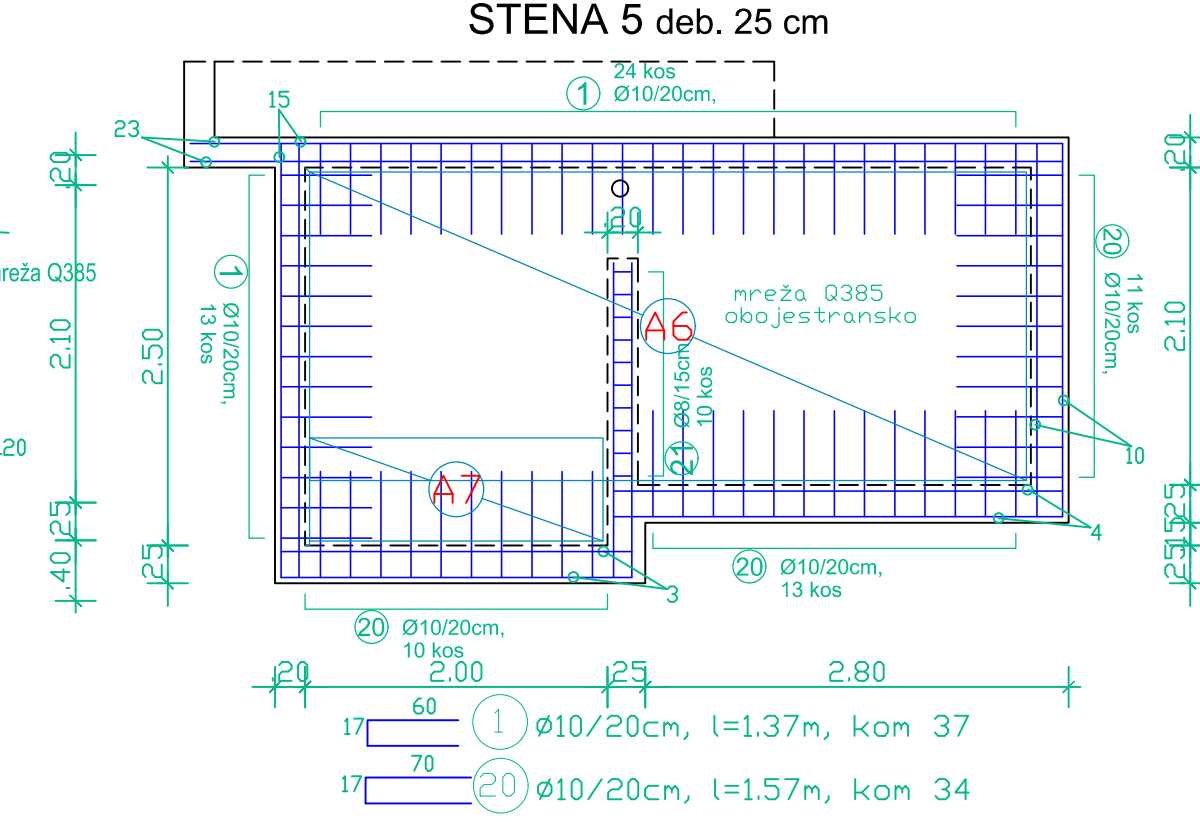
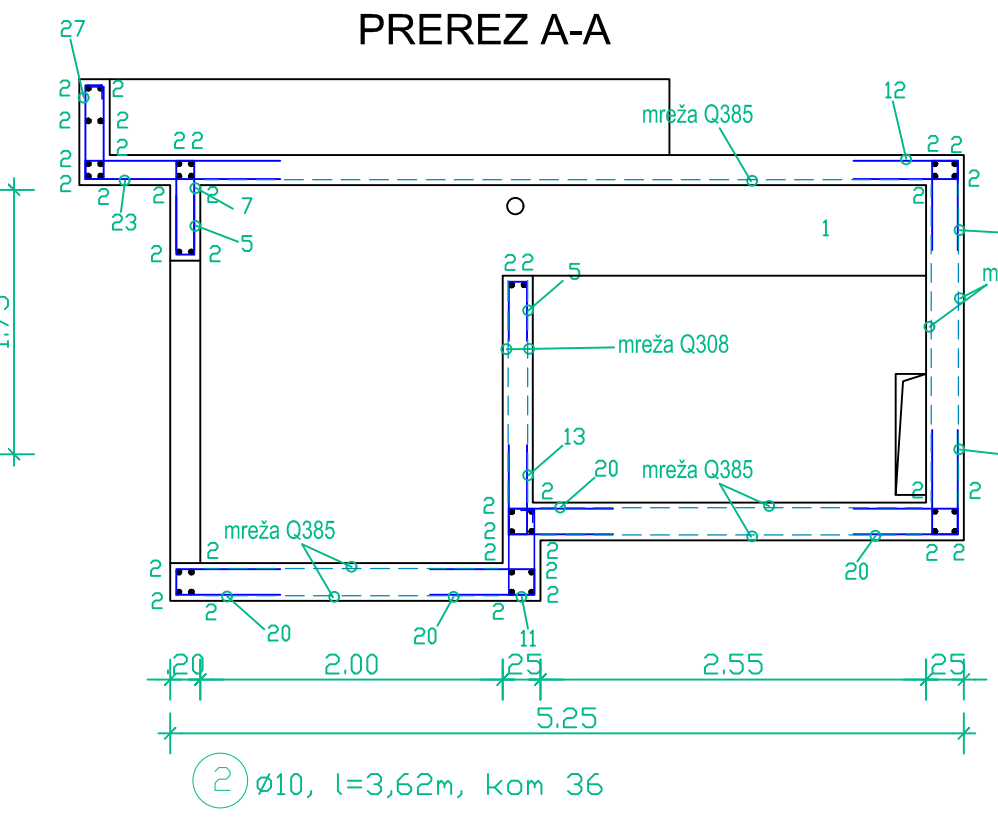
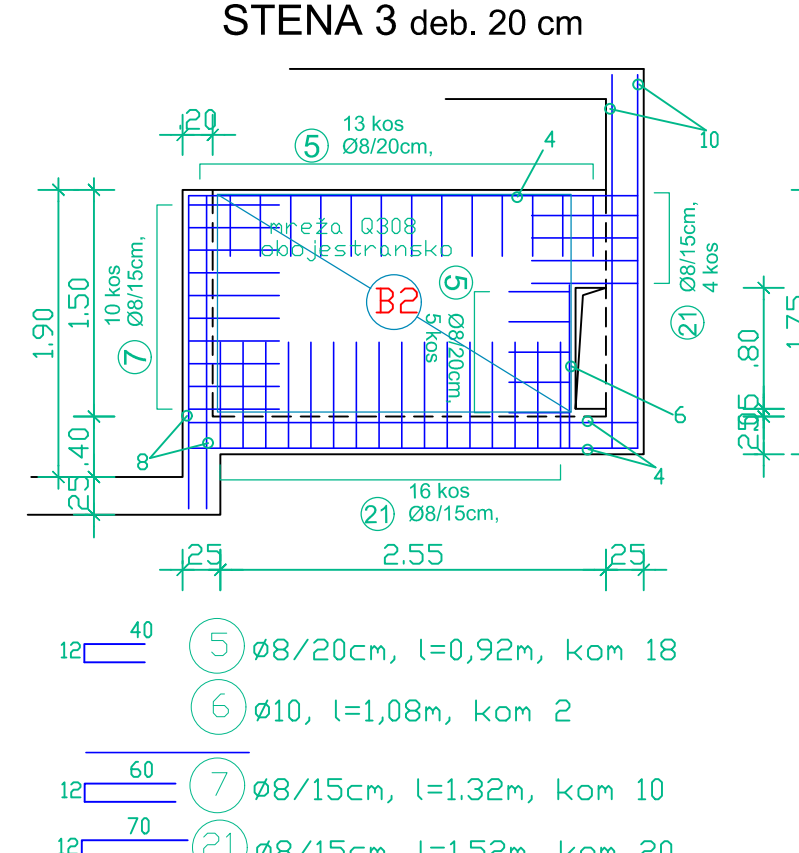
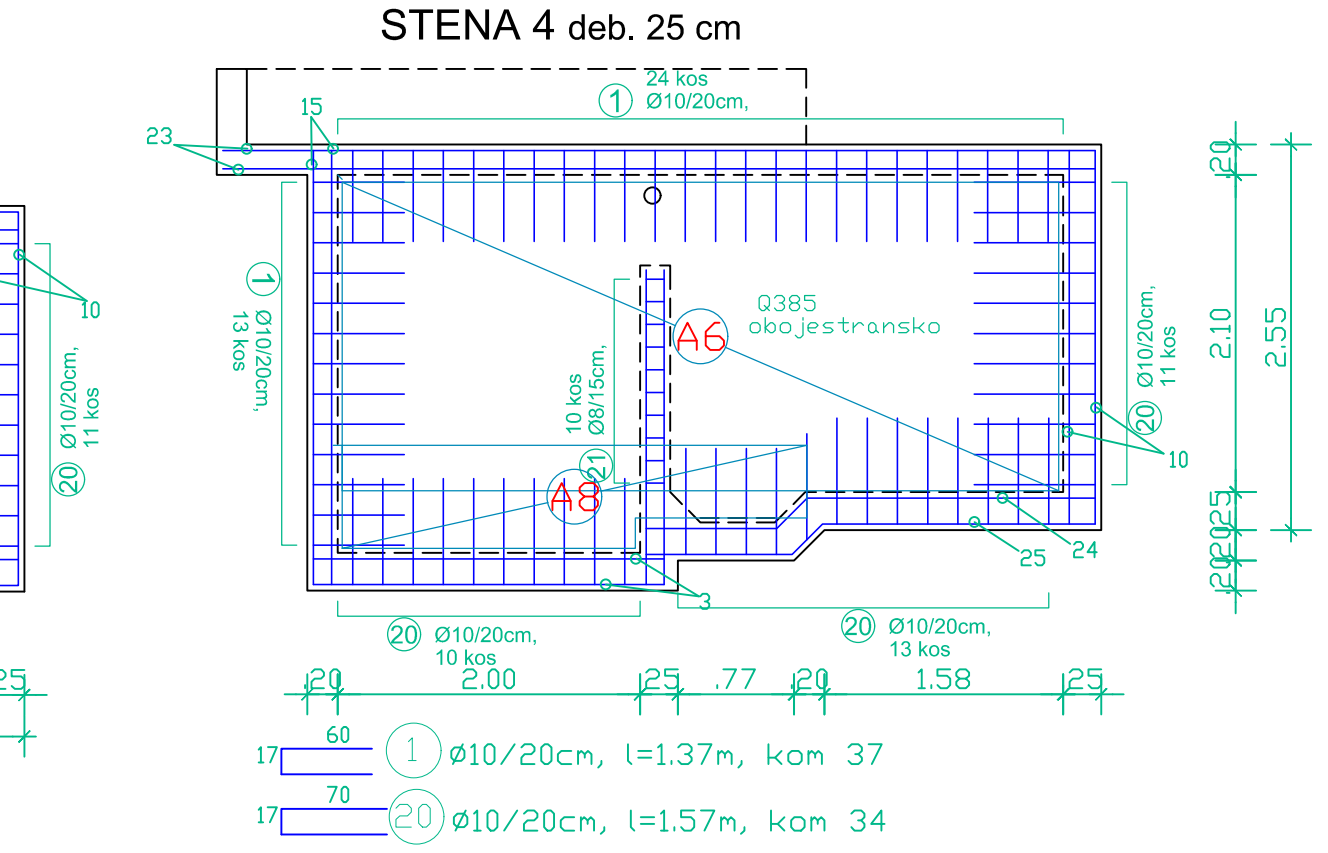
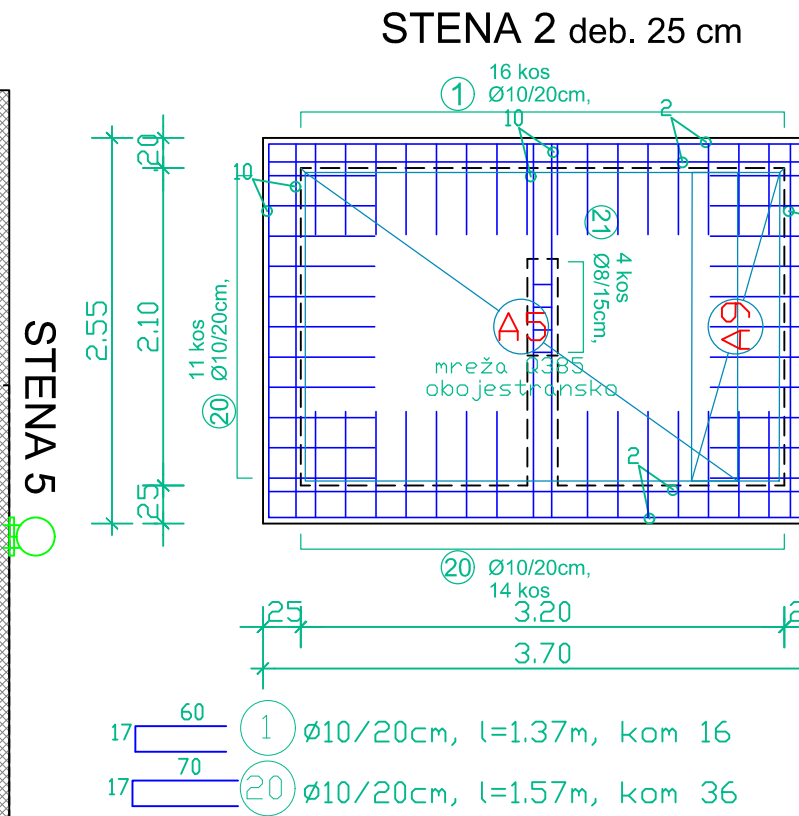
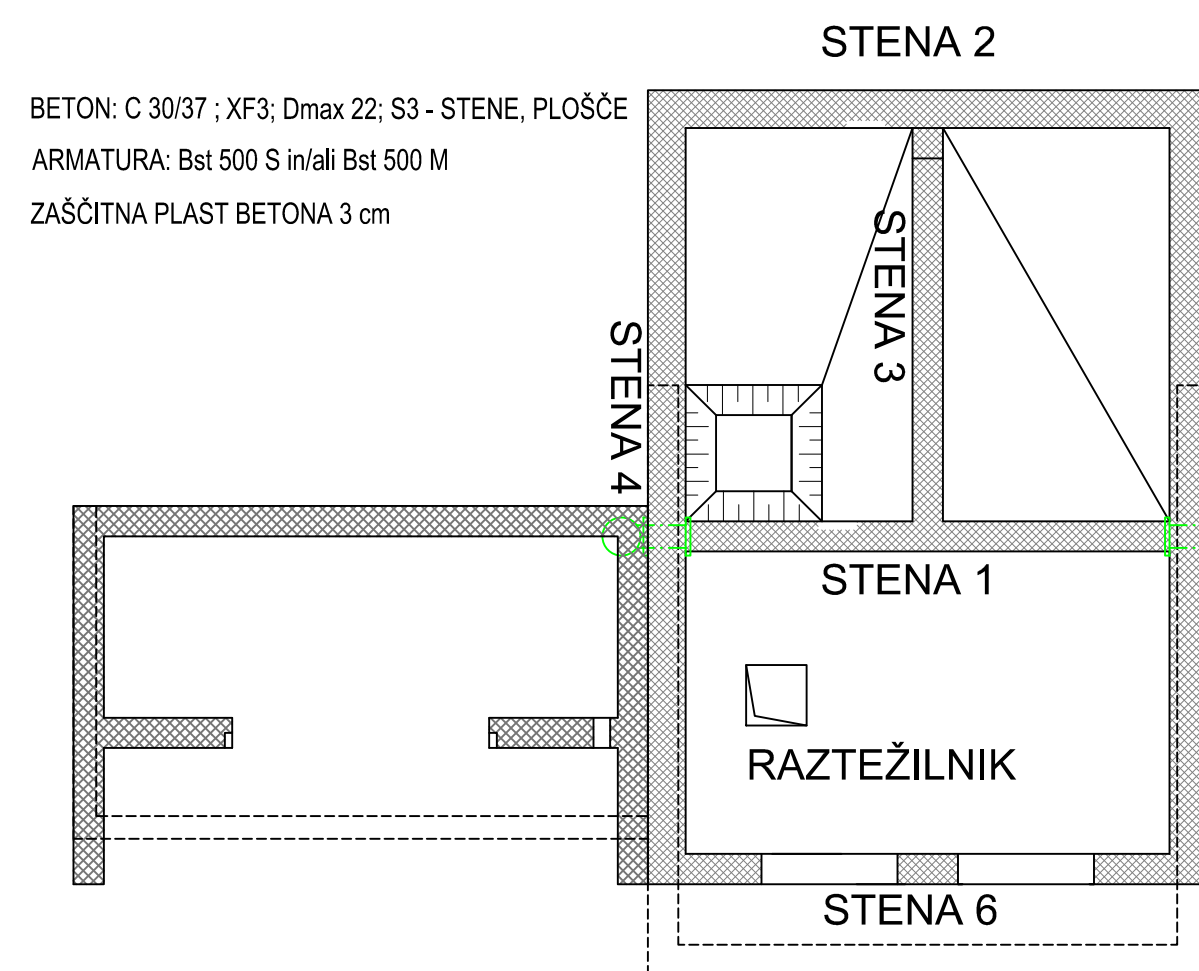


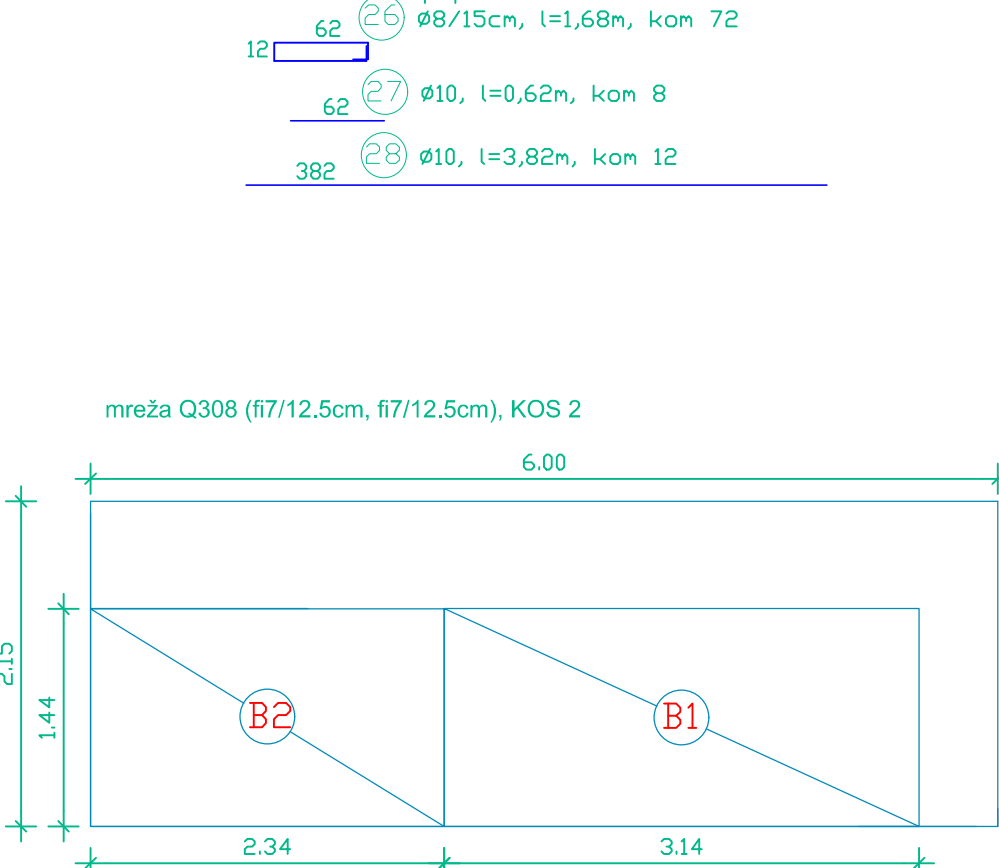
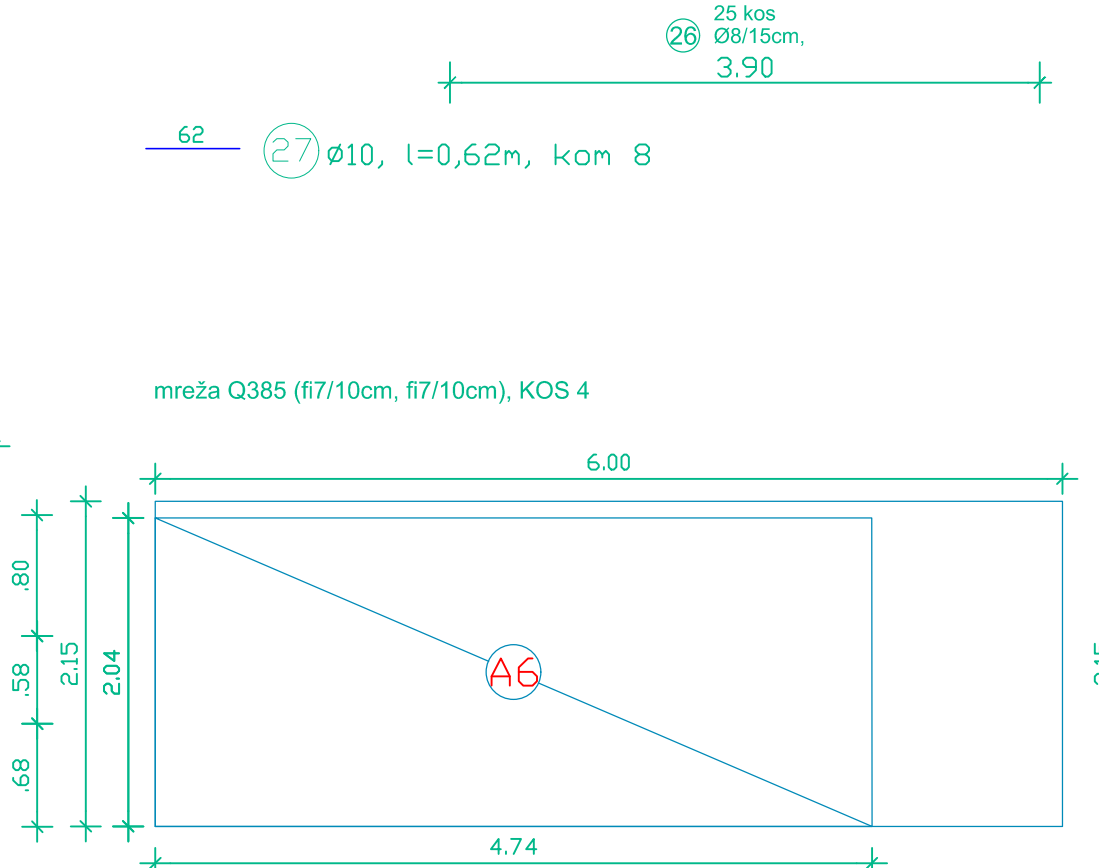
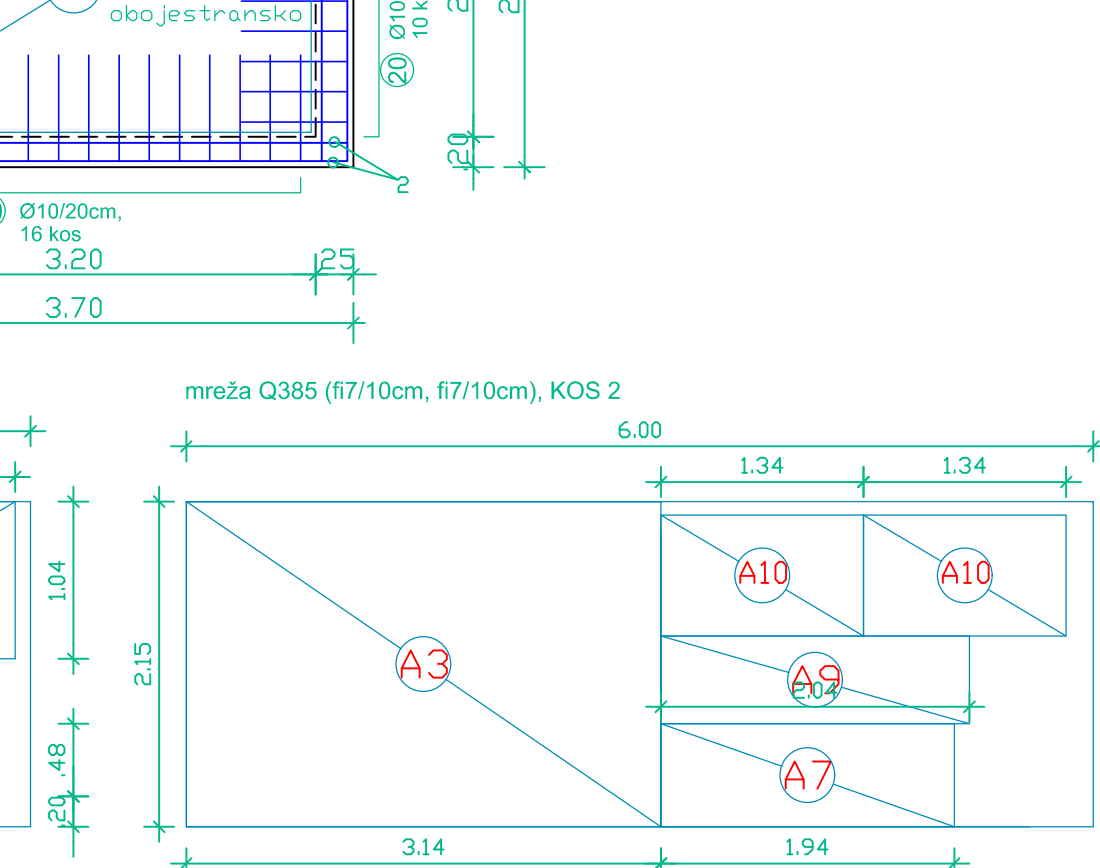
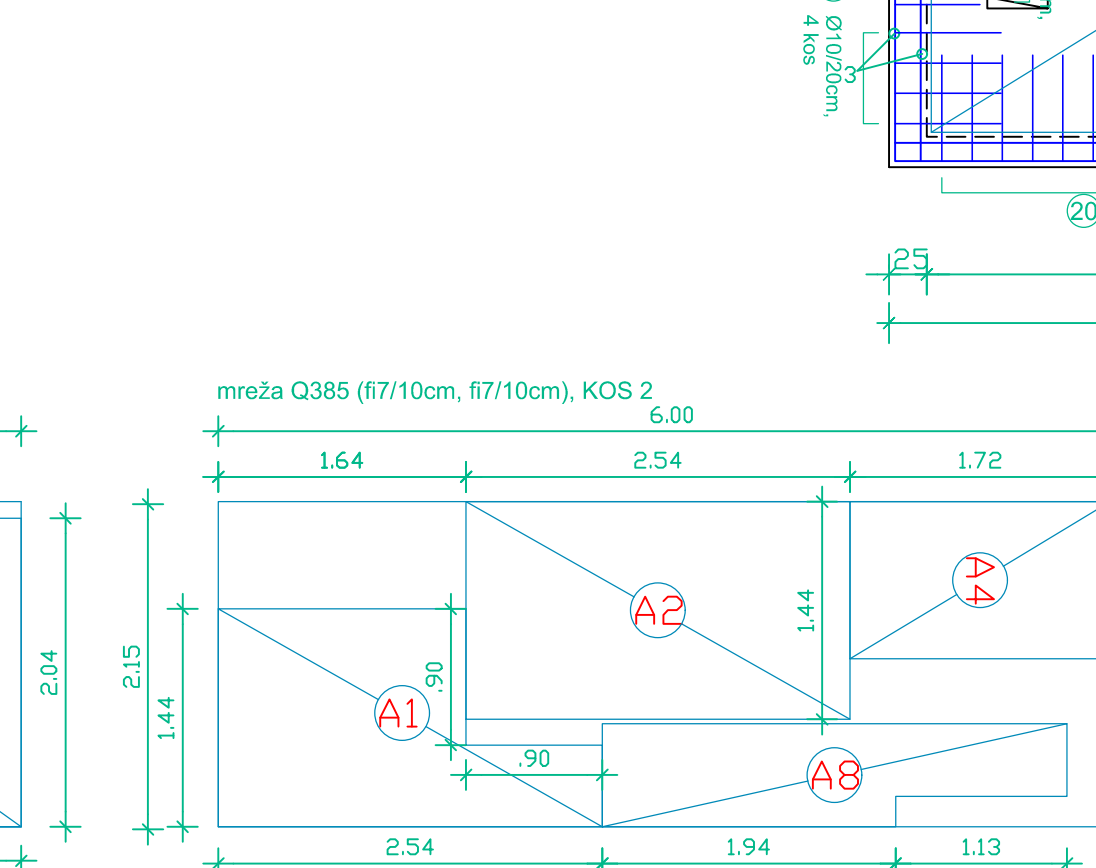
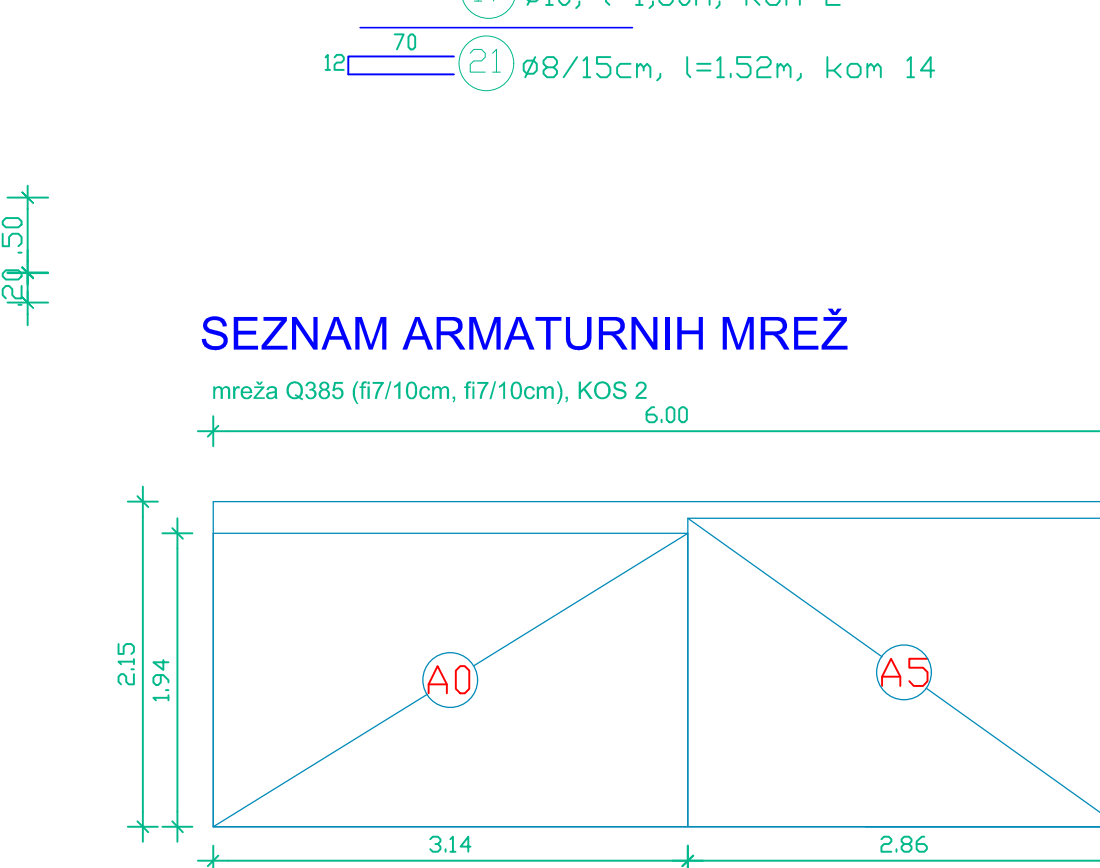
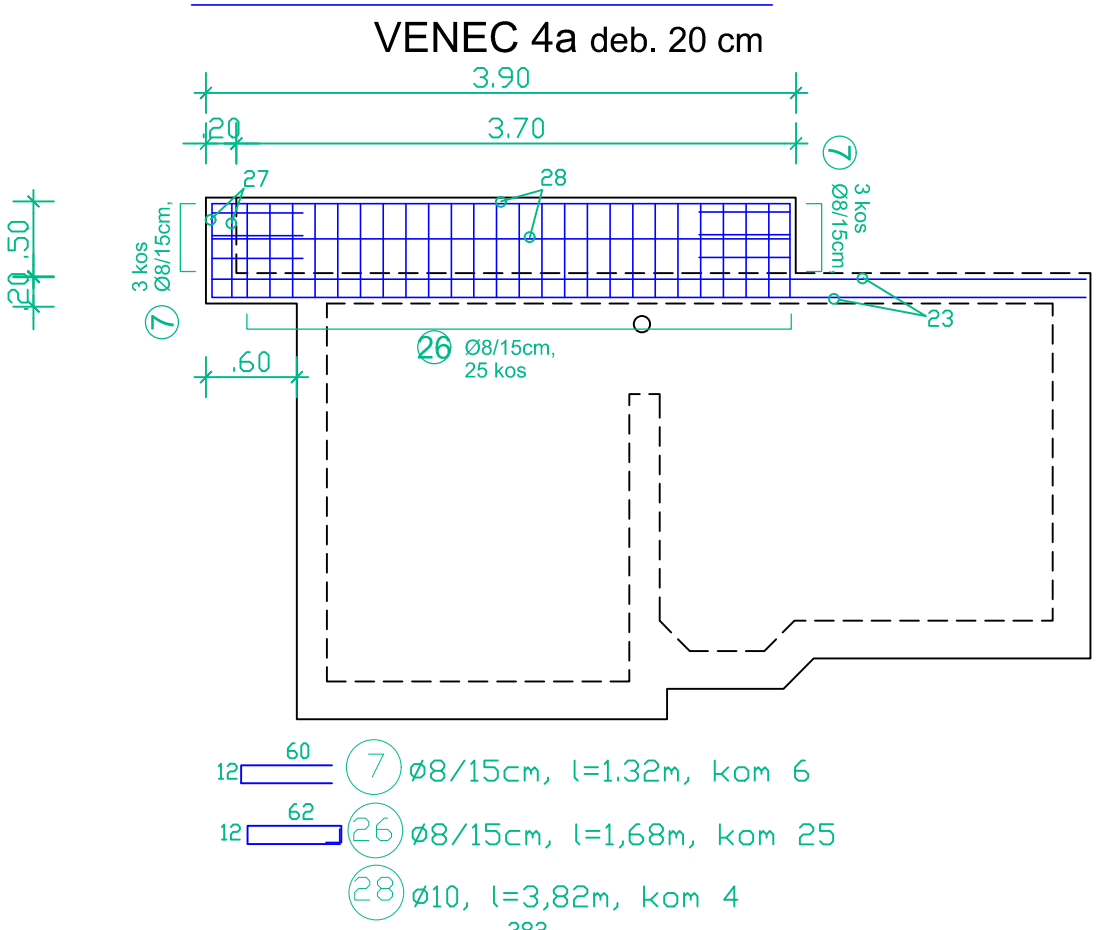
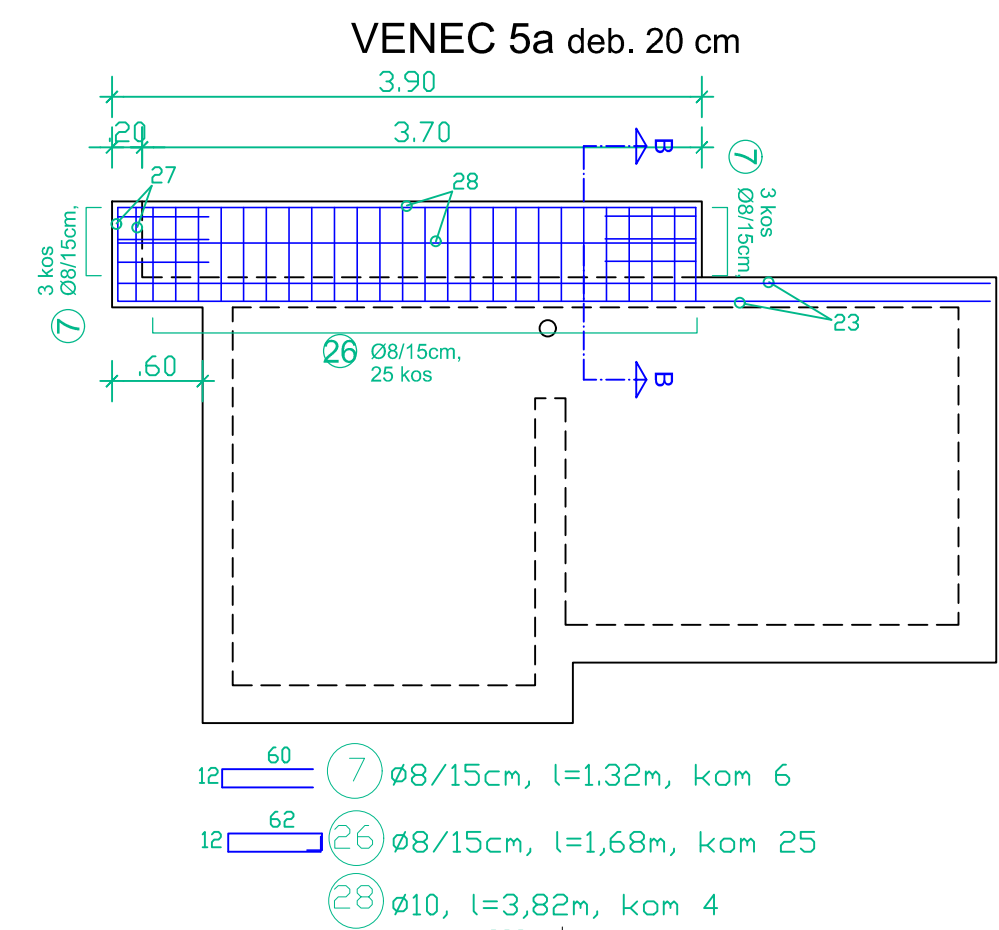
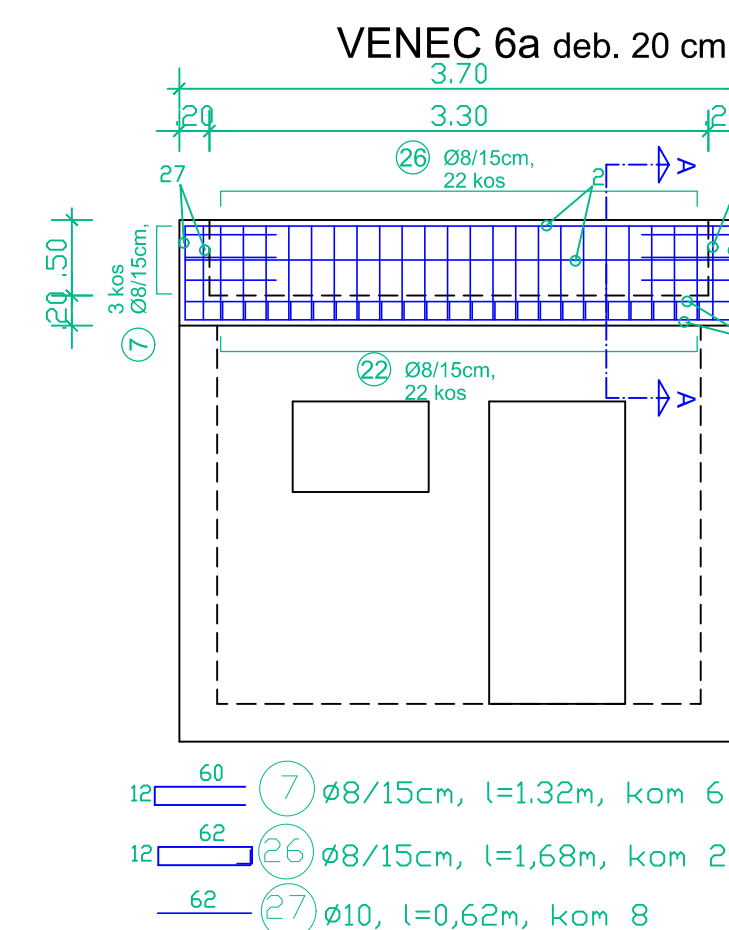
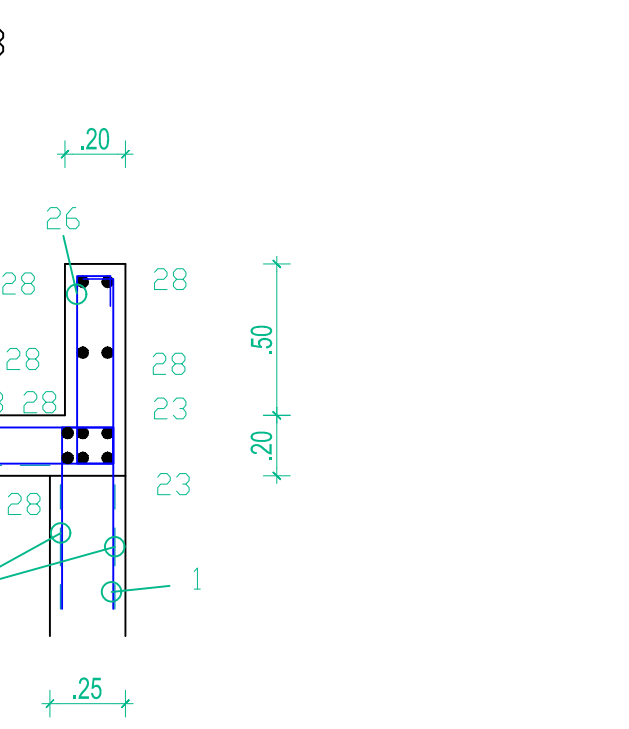
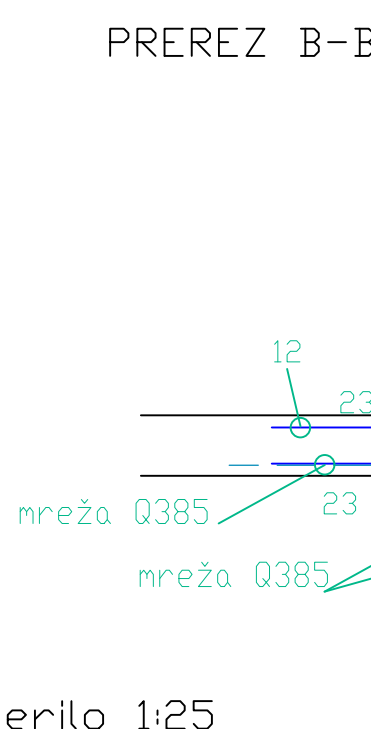
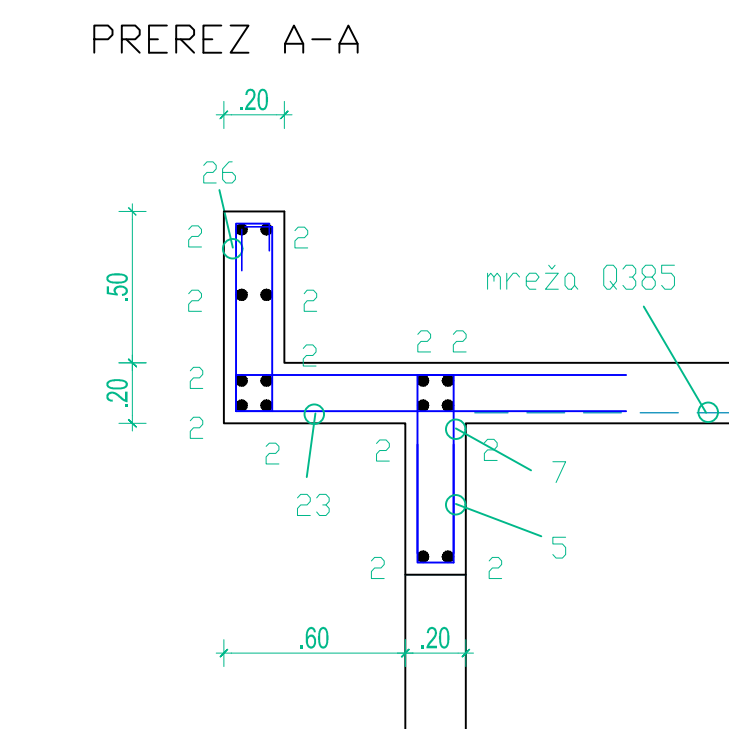
POZICIJSKI NAČRT

BETON: C 30/37 ; XF3; Dmax 22; S3 - STENE, PLOŠČE
ARMATURA: Bst 500 S in/ali Bst 500 M
ZAŠČITNA PLAST BETONA 3 cm





SEZNAM ARMATURE:

objekt: RAZEŽLNIK								
POZIČJA:								
Bst 500 M								
PODATKI O MREŽI								
oznaka	tip Q	kg/kos	kg/m2	dolžina	skupaj kosov	skupaj teža	klasifikacija	kg
Q 257		45.2	4.11	6.00				
Q 283		58.61	4.44	6.00			3-5 kg/m2	123.94
Q 308		61.97	4.89	6.00	2.00	123.94		
Q 335		71.81	5.44	6.00				
Q 385		79.73	6.04	6.00	10.00	797.28		
Q 402		84.35	6.39	6.00			5-8 kg/m2	797.28
Q 424		87.82	6.73	6.00				
Q 503		104.28	7.9	6.00				
SKUPAJ kg Q							kg	921.22
SKUPAJ							kg	921.22



objekt: RAZTEŽILNIK												
POZIČIJA:												
Bst 500 S												
				DOLŽINE PO Φ (m)								
oznaka	Φ mm	dolžina m	kos	φ 6 m	φ 8 m	φ 10 m	φ 12 m	φ 14 m	φ 16 m			
1	10	1.37	116			158.92						
2	10	3.62	36			130.32						
3	10	2.32	8			18.56						
4	10	2.97	8			23.76						
5	8	0.92	69		63.48							
6	10	1.08	2			2.16						
7	8	1.32	28		36.96							
8	10	2.07	4			8.28						
9	10	1.29	3			3.87						
10	10	2.47	12			29.64						
11	8	1.68	15		25.20							
12	10	1.52	64			97.28						
13	8	1.32	16		21.12							
14	8	1.08	5		5.40							
15	10	2.87	30			86.10						
16	10	3.26	2			6.52						
17	10	1.80	2			3.60						
18	10	1.40	5			7.00						
19	10	1.77	5			8.85						
20	10	1.57	212			332.84						
21	8	1.52	54		82.08							
22	8	2.72	22		59.84							
23	10	5.77	12			69.24						
24	10	3.06	6			18.36						
25	10	3.06	6			18.36						
26	8	1.68	72		120.96							
27	10	0.62	6			4.96						
28	10	3.82	12			45.84						
DOLŽINA PO φ				m	0.00	415.04	1.074.46	0.00	0.00	0.00		
TEŽA PO φ (BHO) DOLŽINE				kg/m	0.222	0.395	0.617	0.888	1.210	1.580		
TEŽA PO φ				kg	0.00	163.94	662.94	0.00	0.00	0.00		
TEŽA DO φ 12 IN N A D. φ 14				kg		826.88				0.00		
TEŽA SKUPAJ				kg		826.88						
				višina distančne kače [cm]								
višina				kos	8	10	12	14	16	17		
17				14								
težja				kg/kos	0.580	0.587	0.615	0.765	0.809	0.832	11.648	
TEŽA SKUPAJ				kg	11.65							

	OBČINA AJDOVŠČINA , Cesta 5. maja 6a, 5270 Ajdovščina					
Namiznik:	DETAJI INFRASTRUKTURA		Detajl Infrastruktura d.o.o. Hra. povelj 13 5271 Mignja Slovenija	T 05 36 500 12 F 05 36 500 14 E info@detajl.eu www.detajl.eu	POVEZAVA SISTEMA HUBELJ S SISTEMOM GORA Lokavec - Skuk	
	ime in priimek – naziv		id. št. k25	Vrsta in št. načrta		
Vredn. projekta:	Mitja Lavrenčič dipl. inž. grad		G - 1642	2 - NAČRT GRADBENIŠTVA 18/51-2 G		
Podoblastveni inženir:	Mitja Lavrenčič dipl. inž. grad		G - 1642	Načrt/osebna lista		
Izidalci:	Mitja Lavrenčič dipl. inž. grad			ARMATURNI NAČRT RAZTEŽILNIKA		
Sodistavec:						
Vrsta projekta:	št. projekta 18/51-2	datum: februar 2017	merilo: 1:50, 1:25	številka lista 19		